

Manual Feed Chute for HPC-15

The HPC-15 is equipped with a Feed Conveyor as shown in the following image



In applications where material to be fed is extremely muddy and sticky, Feed Conveyors can be problematic.

For this reason, we offer a Manual Feed Chute as an optional accessory that can be purchased together with your HPC-15 machine.

Material is loaded into the Chute and must then be manually pushed into the HPC-15's Trommel / Scrubber.

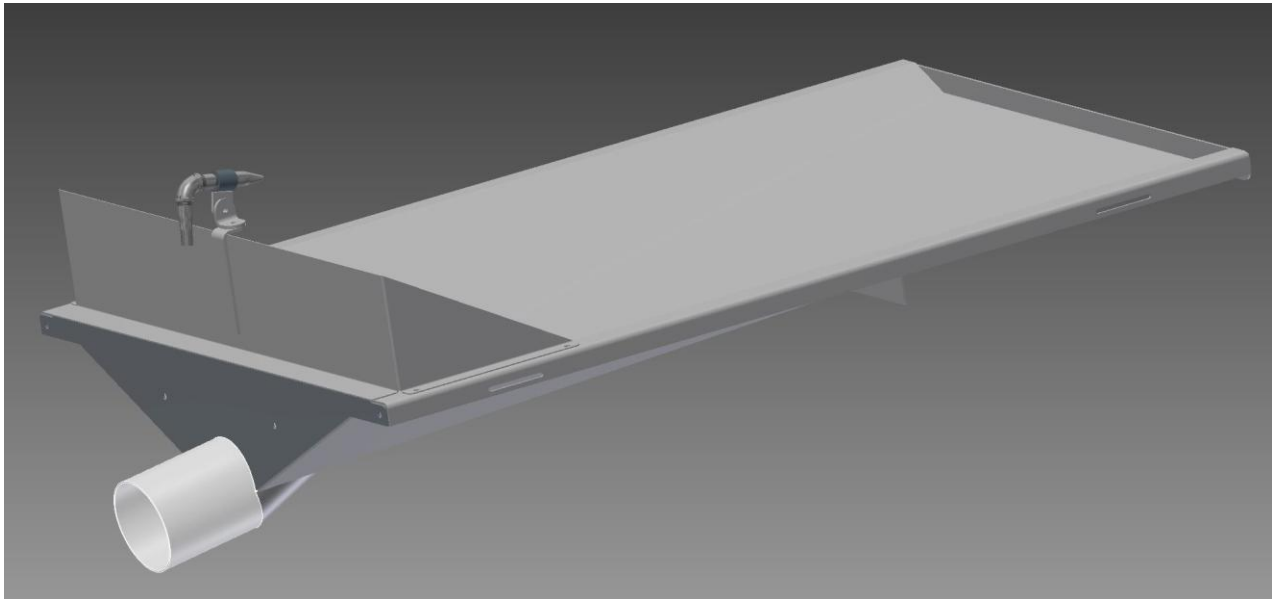
Whilst this Manual Feed Chute does not allow the same degree of feed-rate control and automatic feeding which the standard Feed Conveyor offers, it is an extremely useful accessory for situations where sampling and washing of muddy and sticky material is required.

The Manual Feed Chute includes support legs, an adjustable wash nozzle, a splash protector plate and quick-connect electrics for the Feed Conveyor. When ordering this accessory with your HPC-15, modifications are done so that the electrics of the Feed Conveyor can easily be connected and disconnected.

Exchanging the Feed Conveyor and the Manual Feed Chute is a simple task which can be done in the field as and when needed.



Manual Feed Chute installed on HPC-15



Manual Feed Chute

Please contact us via info@extrac-tec.com for additional information on how our HPC technology can be configured to assist with your processing requirements.